

# Christ Evangelical Lutheran Church of Goodyear

## Friday, March 3, 2023

**All 4 Screenings for \$149**

### **Carotid Artery Disease:**

An ultrasound is performed to screen the carotid arteries (a pair of blood vessels in the neck that deliver blood to your brain) for buildup of fatty plaque. This buildup, called atherosclerosis, is one of the leading causes of stroke.

### **Peripheral Arterial Disease (PAD):**

An Ankle-Brachial Index (ABI) test is performed using blood pressure cuffs on the arms and legs. It is important to screen for PAD because it increases the risk of coronary artery disease, heart attack, or stroke.<sup>1</sup>

### **Abdominal Aortic Aneurysm (AAA):**

An ultrasound is performed to screen the abdominal aorta for the presence of an enlargement or aneurysm. AAA can lead to a ruptured aortic artery, which is a life-threatening medical emergency.

### **Atrial Fibrillation :**

A 6-lead electrocardiogram (EKG) is performed by placing sensors on the arms and legs to screen for Atrial Fibrillation. AFib can lead to blood clots, stroke, and heart failure, and other heart-related complications.<sup>2</sup>



- **Call toll free: 1-844-591-7098**
- **LLSA.SOCIAL/HC**
- **[lisa.irish@llsa.com](mailto:lisa.irish@llsa.com)**

**Pre-registration is required**

<sup>1</sup> No single screening can detect all risk factors for all conditions, such as and including the presence of coronary artery disease.

**Keep doing the things you love.**

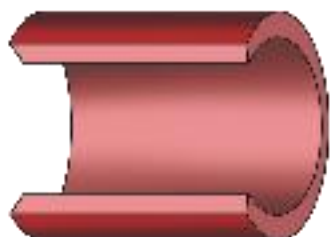
**Catch health problems before they go too far.**

Life Line Screening offers a 4-screening package to provide peace of mind or early detection for risks of stroke and cardiovascular disease.

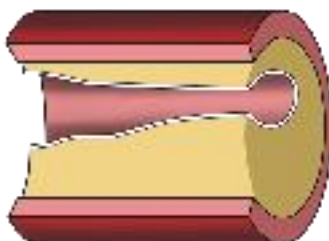
The combination of these tests helps detect problems—**before you have symptoms** and while you and your doctor can still take action...so you can keep doing the things you love.



**Plaque buildup can lead to cardiovascular disease, stroke and aneurysms.**



A normal artery allows blood to flow through easily.



Plaque buildup in the arteries reduces your blood flow and can be dangerous if left untreated.

**Register now to check the health of your arteries**

**4 Important Screenings  
for Only \$149  
(Special Package Pricing)**

- Carotid Artery Disease
- Peripheral Arterial Disease (PAD)
- Abdominal Aortic Aneurysm (AAA)
- Atrial Fibrillation (AFib)

**Join the 10 million people who have been screened.  
We are coming to your neighborhood.**

**Friday, March 3, 2023**

**Christ Evangelical Lutheran Church  
918 South Litchfield Road, Goodyear AZ 85338**

To register for your appointment and to receive the special discount,  
please call toll-free **877-792-8479** or visit [LLSA.SOCIAL/HC](https://LLSA.SOCIAL/HC)

Screening results are provided to you in about 14 days. We direct all participants with abnormal results to take the report to their physician. Appropriate modification of risk factors (including high blood pressure, smoking, heart disease, diabetes and poor diet) is also necessary for cardiovascular disease prevention. Our screenings cannot detect all forms of stroke risk or cardiovascular disease. All tests are for screening purposes only. You should consult with your personal physician regarding your screening results. Price does not include any applicable review fees. Insurance Note: Life Line Screening does not participate in the Medicare program and the cost of our screening services is not covered or reimbursable by Medicare. Life Line Screening does not file insurance claims nor provide referrals to any physician's group or hospital. If you are unable to attend the screening for any reason whatsoever, we will issue a gift card for the full amount to be used by you, or anyone you choose, for future screening services.