

# ANNUAL REPORT 2025



Evangelical  
Lutheran Church  
in America

## A MESSAGE FROM PRESIDING BISHOP YEHIEL CURRY

Dear friends in Christ,

As Lutherans, we are set free to love our neighbors and seek justice. In Colossians 2, we read: “As you therefore have received Christ Jesus the Lord, continue to walk in him, rooted and built up in him and established in the faith, just as you were taught, abounding in thanksgiving” (6-7).

I am abounding in thankfulness for you, church. You are an integral part of this mission as we envision a world experiencing the difference God’s grace and love in Christ make for all people and creation. The ministries of congregations including yours, our synods and the ELCA churchwide organization are all working together today and every day so more people may know the way of Jesus and discover community, justice and love. From providing food to people experiencing hunger, to helping train the next generation of leaders that will lead this church, your support is at work here at home and around the world.

Your generosity to each of the three expressions of the church — your congregation, your synod and the churchwide organization — has made it possible for us to do this work

together. Your financial resources, your time volunteering and accompanying others, and your voices are so valued.

As we look ahead to the coming year, I encourage you to continue to walk in Christ, remembering you are rooted and established in faith, and free to love and serve your neighbors. Thank you, church, for the ways you connect with and support our siblings across the ELCA and in our communities.

In Christ,

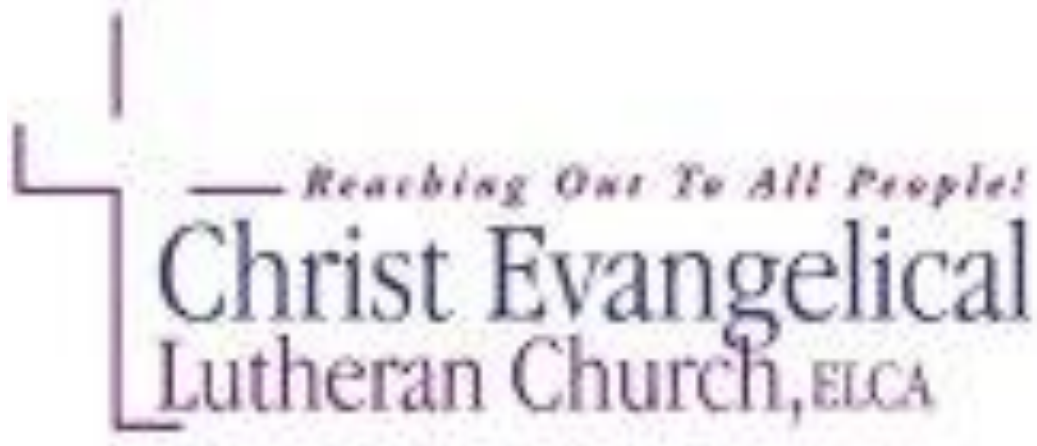


A handwritten signature in black ink, appearing to read 'Yehiel Curry'.

The Rev. Yehiel Curry  
Presiding Bishop  
Evangelical Lutheran  
Church in America

“As you therefore have received Christ Jesus the Lord, continue to walk in him, rooted and built up in him and established in the faith, just as you were taught, abounding in thanksgiving.”

—Colossians 2:6-7



# 2025

## Annual Report

### **Mission Statement**

“We are a Christian fellowship, reaching out to all people, so that all may see, know and experience God’s love for them.”

## **Vision Statement**

"To be a Christian fellowship that is Spirit-led and engaged in participation and service to our congregation and the larger community."

## **Values**

- **Christ-Centered**

- o Through Worship, Teaching, Learning, Interactions with each other

- **Service**

- o By Outreach to both our larger Community and our Congregation

- **Welcoming**

- o By being Accepting and Inclusive, and showing Tolerance for our differences

- **Community**

- o Through our Relationships, Fellowship, Support of each other

- **Diversity**

- o Embracing differences in Ethnicity, Age, Life Experience

**Christ Evangelical Lutheran Church  
Annual Meeting of the Congregation  
Agenda - January 25, 2026**

*We are a Christin fellowship reaching out to all people,  
so that all may see, know and experience God's Love for them.*

1. Call to order.....President Carol Moonan
2. Opening liturgy
3. Appointment of Tellers and Parliamentarian: ..... Carol Moonan
4. Approval of Minutes: January 26, 2025, Annual Congregational Meeting  
April 6, 2025, Special Congregational Meeting to elect Call Committee
5. Review of 2025 Staff and Council reports
6. Presentation of 2026 Mission Spending Plan ..... John Brown and Ann Bruce
  - a. EOY 2025 and Cash on Hand Statement
  - b. 2026 Operating Budget and Mission Spending Plan
7. Declaration of quorum
8. Nominating Committee report –
  - a. Council Candidate Nominations from the Floor
    - 1) Buildings and Grounds – 1-year Term – Jim Hill
    - 2) Education – 2-year Term – Beth Blankenship
    - 3) Fellowship – 2-year Term - Valerie Ellis
    - 3) Outreach – 2-year Term – Su Erickson
    - 4) Worship – 2-year Term – Stevie Henderson
  - b. 2026 Audit Committee  
Ron Nawrocki, Dave Moonan, Jim Hill
10. Casting of written ballot
11. Call Committee Update .....Connie Sornsin
12. Recognition of out-going Council members and other ministry staff/volunteers
  - a. Magan Ratafsky – Education
  - b. Jo-Ann Wordell - Secretary
  - c. Sharoll Blodget – Finance Team/Office Volunteer
  - d. Ann Bruce – Finance Team
  - e. Jim Erickson – Building & Grounds Coordinator, IT, AV
  - f. Su Erickson – Outreach, Office Volunteer, Mentor
  - g. Miloy Canete – Worship & Music Director
  - h. Pr. Kim Sterner – Interim Pastor
14. Results of elections
15. Closing comments and prayer
16. Adjournment

Christ Evangelical Lutheran Church  
Annual Congregational Meeting  
January 26, 2025

1. **Call to order**

Council President Su Erickson called the 2025 Annual Congregational Meeting to order at 10:20 a.m.

2. **Opening liturgy**

Tony Fabrello led the congregation in the liturgy and Miloy played the opening hymn.

3. **Appointment of Tellers**

President Erickson announced the tellers: David Bruce, Jim Hill, David Gregor and Ken Olson. Ann Bruce is the Parliamentarian.

4. **Approval of the minutes from the 2024 Annual Meeting**

Sharoll Blodgett moved to accept the minutes of the 2024 meeting as presented in the Annual Report, Judy Turpen seconded. Motion carried.

5. **Review of staff and council reports (and 2024 audit report)**

President Erickson directed attendees to the staff and council reports in the meeting packet. A video put together by the Coyle's son of the Outreach program was presented. President Erickson asked if there were any questions. Hearing none, she proceeded with the agenda.

6. **Review of the 2024 Mission Spending Plan and Presentation of the 2025 Plan**

John Brown reviewed the Mission Spending Plan for 2024 and reported that our income of \$419,000 was \$11,000 over the amount that he had budgeted for the year. It was \$12,000 better than 2023. John explained that part of the reason for this positive amount is that Pastor Kim receives less money than Pastor Jeff did. He is projecting \$417,000 in revenue for 2025 and \$386,000 for expenses. John explained that we will have some expenses related to the call process and inflation. Ron Nawrocki asked about insurance and was told that we are insured. John then went over the different fund balances, reported that we will need to refinance our mortgage in 2 years, gave a short explanation of the 2025 Mission Spending Plan and asked for questions. Kathy Coyle asked if Miloy had gotten a raise and John answered that both Miloy and Jonathan had received 3% raises.

7. **Declaration of quorum.**

Su Erickson confirmed that quorum was present with 67 members in attendance.

8. **Nominating committee report**

Su presented the slate of candidates – there were no nominees for Building and Grounds, Youth or Fellowship - and asked for nominations from the floor. There were no nominations from the floor so nominations were closed. The following people were nominated for council positions:

- a. Stewardship – 2 year term – Ann Bruce
- b. Evangelism – 2 year term – Sandy Gabel
- c. Fellowship – 1 year term no candidate
- d. Building and Grounds - 2 year term – no candidate
- e. Youth – 2 year term – Olga Blanchard

Su then announced that the audit committee needs 1 person to audit the 2024 financial records. Ron Nawrocki will fill that position along with Keith LeFevre and Mike Coyle.

The council Secretary is Joann Wordell, and the Treasurer is John Brown.

**10. Casting of written ballots**

The written ballots were distributed to the congregation members. The ballots contained a vote for council positions and the Mission Spending Plan.

**11. Update on transition process**

Ann Bruce us leading the Transition Team and Su discussed the upcoming election of the Call Committee.

**12. Update on solar project**

Su reported that we have lost the money that was spent on the solar project. A letter was sent out in July explaining what happened. The owner of the company that we were working with is in prison and the company no longer exists. Don Stevens, the attorney working with the synod, feels that we probably will not be able to get our money back. We have looked at working with Sun Valley Solar but would have to find investors and we would pay them back. We can also look at getting a loan from either the Mission Investment Fund or the ELCA. Ellory Christianson asked how much money was lost - \$40-42,000. Greg Ellis asked if solar was worth it and John Brown responded that it was profitable after 5 to 7 years. We would just break even at first. Stevie Henderson commented that as a congregation we are in turmoil because of the transition process and suggested that we table the solar project until later. Ardyce Durand asked if we could recoup some of our money from the Registrar of Contractors but they only work with residential complaints and we are considered a commercial entity. Su gave a further explanation of the solar issues. Beth Blankenship commented that she is an employee of the Avondale School District and they are using Sun Valley Solar. Jim Hill commented that he has reviewed Randy's paperwork and he doesn't think that the current proposal is very good and we should slow down and look for other options. Greg Ellis commented that data centers lead to price increases and we should start looking now. Su discussed our other upcoming expenses – repaving the parking lot, painting the buildings and possible air conditioner replacement. Kathy Coyle asked for applause for Su for the job she is doing as president.

**13. Recognition of outgoing council and committee members and other staff**

Su started with thanking all of the people who have volunteered over the last year. She started with Ardyce Durand who is also a leader of Outreach. Randy Heibel went through the list of outgoing Council members and handed out cards to:

Judy Turnen – Evangelism

Gene Myers – Fellowship

Judy Turpen – Stewardship

Darrel Bjornson and Janell Jensen – Audit Committee

Facilities manager and Pastor of Vida Nueva – Jonathan Gonzalez

Director of Music and Worship – Miloy Canete

Interim Pastor – Kim Sterner

**14. Election results**

61 completed ballots were returned. All nominees were elected and the 2025 Mission Spending Plan was approved.

**15. Closing comments and prayer**

Su asked for any comments or questions.

**16. Adjournment**

Mike Coyle moved to adjourn the 2025 Annual Meeting and Sandy Gabel seconded. Motion carried. The 2024 Annual Congregational Meeting adjourned at 11:15 am.

Respectfully submitted by Ann Bruce and Joann Wordell

Christ Evangelical Lutheran Church  
Special Congregational Meeting minutes  
April 6, 2025

Council President Carol Moonan called the special congregational meeting to order at 9:35 a.m. The sole purpose of this meeting is for the congregation to elect the members of the Call Committee.

A quorum of the congregation members was present.

The congregation members who have been nominated to serve on the Call Committee were introduced and asked to stand. Those people are Jennifer Cole, Kathy Coyle, Jim Erickson, Tony Fabrello, Connie Sornsin, Rae Valabek, and Fred Wordell.

Ballots were passed out previously as voting members of the congregation entered and signed in. Additional ballots were given out as indicated by raised hands. Tellers Dave Moonan and Tom Reynolds collected and counted the 75 ballots returned. All voted in favor of electing the seven members of the CELC Call Committee.

MOTION: A motion to adjourn the meeting was made by Rollin Neumann and seconded by David Gregor. The motion passed unanimously.

The Special Meeting adjourned at 9:39 am.

Respectfully submitted,  
Jo-Ann Wordell

## Interim Pastor's End of Year Report 2025

Can you believe it? It's been another year of ministry and mission at Christ Evangelical Lutheran Church in Goodyear. This congregation has a marvelous way of getting everything done that needs to be done. It is like family.

I hope you will read all the reports submitted this year. Between the folks that regularly help with Food Distribution Tuesdays; people that lead bible studies; work with youth and Sunday School; make sure everything is in place for Sunday Worship! There is a lot to report.

There are lots of reasons to give thanks. CELC took in New Members this year. We had three baptisms! The Sunday School took their Christmas program on the road to a retirement facility! All signs of a very healthy congregation.

Another sign is our giving. The financial reports look really good. Thank you for your generous and consistent giving this past year.

These are the things potentially interested pastoral candidates will be looking at. Giving, growing, doing. At CELC we can check all those boxes with confidence.

I know that we were all hoping and praying that the search for a New Pastor would have been more fruitful by now. And yet, all in God's time. All in God's time. We've had a year of seeing that we can do ministry – make decisions – handle new arrangements – even with an interim pastor. Good and faithful servants of Christ – you have worked hard.

In this New Year we will pray and hope for that answer to prayer for a new pastor. God hears your prays, knows your concerns, and strengthens you through his presence for all that lies ahead.

God is good!

You are such a blessing.

Pastor Kim Sterner

Interim Pastor, CELC

## **Worship & Music Ministry Annual Report 2025**

The Worship and Music Ministry continues to be a vital part of the life of Christ Evangelical Lutheran Church, supporting and enriching our shared worship through music, liturgy, and the faithful service of many volunteers.

This past year, our choral and instrumental offerings were highlighted by two major cantatas with orchestra, presented during the Lent/Easter and Christmas seasons. These larger works enhanced our worship during the most significant times of the church year and reflected the congregation's continued commitment to offering music of depth, beauty, and theological richness.

Our children and youth ministry remains a source of joy and hope for the future of the church. This year, they presented the musical "The Mystery of the Missing Manger," and it was evident that the production improves each year—not only musically, but also in confidence, teamwork, and storytelling. Their dedication, along with the support of families and volunteers, is deeply appreciated.

The Adoration Choir has faithfully maintained its core group of singers throughout the year. Their commitment to regular rehearsals and worship leadership is a blessing to the congregation. While we are grateful for this steady foundation, we recognize the ongoing need to recruit additional singers and are exploring welcoming and creative ways to invite new participants into this ministry.

Our worship services are also sustained by many faithful volunteers. Greeters, hospitality teams, lectors, and communion assistants, A/V techs have served consistently throughout the year, offering warmth, order, and reverence to our worship gatherings. Their reliability and faithfulness are essential to the worship life of our church.

Looking ahead, the Worship and Music Ministry seeks to expand its role as a bridge between the church and the wider community through music as outreach. We hope to welcome neighbors and visitors into our space by offering concerts and musical events that reflect both excellence and compassion. This initiative will begin with a community concert on January 18th featuring Ukrainian musicians, using music as a means of hospitality, witness, and solidarity.

As we move forward, the Worship and Music Ministry remains committed to worship that proclaims the Gospel, engages all generations, and invites the congregation—and community—into deeper connection with Christ Evangelical Lutheran Church.

Miloy Canete, Director of Worship and Music

## President's Annual Report 2025

Joyful Service!

Each week we are given the marvelous opportunity to sing and pray together, using songs, hymns and prayers of thankfulness to express the thoughts in our hearts. This is how we can serve with gladness and joy as we cultivate a lifestyle of thankfulness. I see so much of this every time I'm in our church home.

We are here in this special place we call Christ Evangelical Lutheran Church because we want to be here. Here we receive comfort, compassion, and courage to continue our journey. We are given the opportunity to serve, worship and praise our Lord and Savior. I am grateful for each one of you!

This has been a year of learning for me! I was asked some questions I never expected to be asked. I was given credit for things I had not done. I was supported in many ways and given guidance and encouragement by many people, and I am very grateful! I became aware of many of the things that must happen to keep a place like this running smoothly. There are many moving parts and many people who make those parts move.

It was a special privilege to welcome our Call Committee this year. Connie Sornsin (Chair), Jennifer Cole, Kathy Coyle, Jim Erickson, Tony Fabrello, Rae Valabek and Fred Wordell were nominated and accepted the task of discerning if a pastor sent to us is the best fit for our congregation. Please continue to pray for them in this very important mission.

I want to express gratitude to ALL of you for sharing the gifts and talents you have been given by our God. Perhaps you, like me, are trying something new outside of your comfort zone. Thank you for saying "YES" when you are asked to help and for seeing what needs to be done and taking the initiative to do it joyfully!

Carol Moonan

## **Transition Team**

The CELC Transition Team wrapped up its activities in the early part of the year. The members of the Transition Team were Ann Bruce (chair), Stevie Henderson, Karen Olson, Olga Blanchard, Jim Erickson, and Patsy Blankenship. A final report was written that included a history of CELC, the makeup and fundamentals of the congregation, and a description of some of the challenges. Also included were an updated mission statement, along with a new vision statement and set of values which were developed by engaging the congregation in discussions. The Transition Team Final Report was approved by the church council including the mission, vision, and values. The final Transition Team Report is available on the church web site.

Submitted by Ann Bruce (chair of Transition Team)

## **Call Committee**

The call committee was elected by the congregation in a special meeting on 4/6/25 and a chairperson was selected by the committee. The members elected being Connie Sornsin (chair), Jennifer Cole, Kathy Coyle, Jim Erickson, Tony Fabrello, Rae Valabek, and Fred Wordell. We began meeting in May 2025 to complete the ministry site profile (MSP) which the synod and potential candidates use to help discern if a call is appropriate. We completed it with active contributions from the CELC Transition Team. It was approved by the church council and the synod in June. Since the initial completion, we have worked with the synod transition team and made a couple of changes that will give us a broader range of candidates. We have also met and reviewed the interview questions and how we will conduct the interviews. As of now, we have not yet had any candidates presented to us to interview, but we hope to get a candidate in the next few months.

Submitted by Connie Sornsin (chair of Call Committee)

## Building and Grounds

### General

I want to give a special thank you to a number of individuals.

**Jonathan Gonzalez, CELC Facilities Manager** (he is also the pastor of the Vida Nueva congregation which meets at CELC), does an outstanding job of keeping our facilities clean and in good shape. He is tireless at shifting tables and chairs as needed and making me aware of maintenance issues that need to be addressed.

**Kathie Townsend** is at the church every Friday morning doing work to maintain and beautify our grounds.

**Building Support Team** –A group of people agreed to be on the team to provide assistance for building/grounds projects and to serve as a sounding board for any questions or concerns. People on this team are **Dave Bruce, David Gregor, Randy Heibel, Jason Blankenship, Jim Hill, Jerry Gobe, Ken Olson, Kathie Townsend, Walt Rawls, Rob Hammerling, Bob Addy, and Tony Fabrello**. Thanks for their willingness to help.

**Cleanup Day** – Thank you to the 40 individuals from CELC, Vida Nueva, and Valle de Beraca who participated in the November Cleanup Day. A significant list of activities was accomplished including power washing the tables and chairs from both buildings, a deep cleaning of the Building B kitchen, and washing windows in both buildings.

**General Organization** – Two unused and damaged spinet pianos (one in Building A and one in Building B) were scrapped. Also, the stacks of damaged chairs in the Building A sanctuary were disposed (with the permission of the other congregation that owned them).

**HVAC Systems** – Annual maintenance was performed and a capacitor on one of the units in Building A Fellowship Hall was replaced when it failed.

**Backflow Valves** – Backflow Valve inspection was performed successfully. However, a leak developed in the Building B backflow requiring a fix.

**Solar Project Follow-up** – Additional discussions were held with Sun Valley Solar to see if there were any possibilities. It was concluded that this was not viable. Any further solar discussions are on hold.

### Building A

**Fellowship Hall** – a volunteer team of 10 put a much-needed coat of paint on the interior walls of the Fellowship Hall including the bathrooms (thanks to **Valerie Ellis** for her leadership on this). New window blinds were also installed (thanks to **Valerie Ellis, Karen Olson, Ken Olson,**

**and Dave Bruce**). Repairs were made to reduce the noise from the women's bathroom fan and repairs were made to a leaky valve in the men's bathroom.

**Kitchen** – The sink clogged multiple times at least in part due to the garbage disposal that has not been working for a number of years. The decision was made to replace the garbage disposal, sink, and faucets and also repair any broken/loose tiles. **Jim Hill led this effort with a team of volunteers (Steve Fina and Jason Blankenship) to do this work.**

**Sanctuary** – The source of the intermittent sewer gas smell was identified and resolved. The ceiling fan in the choir loft area failed and was removed with the intent to replace in 2026.

**Office Area** – Installed a ceiling fan in the small office off the hallway that connects to Fellowship Hall and repaired a light outside of the office.

## **Building B**

**Kitchen Freezer** – One outreach freezer stopped working and determined not worth repairing. It was disposed of (along with the Outreach 3 -door refrigerator that failed last year). A new freezer was purchased with designated Outreach funds and installed in the kitchen **Thanks to Jonathan, Jim Hill, Steve Fina, Randy Heibel, and Eddie Espinosa** for their assistance in getting the new unit unpacked and moved into the kitchen

**Fire Suppression/Alarm** – Hood cleaning completed along with associated Fire Suppression inspection. Fire alarm inspection was also held, and it was found that the external alarm bell did not ring when required and the bell was repaired.

**Plumbing work** – Kitchen faucet leaks were fixed. The replacement of the external water shutoff valve on the east side of Building B was completed.

**Kitchen general** - Warnings on the proper "usage of stove" were posted due to issues with the gas not being shut off properly. The kitchen stove and ovens received a very thorough cleaning by **John Blanchard and Skip Hood**.

**Roof Leak** – A roof leak in the Southeast corner of the sanctuary was repaired.

## **Exterior**

**Building A Landscaping** – The landscaping in front of the Building A office area was completed this fall with fresh rock, some decorative boulders, two pygmy palms, and a crushed rock walkway. A big thank you to the landscape team who helped identify the parameters desired that were used to get and evaluate bids for this work (**Ken Olson, Stevie Henderson, Kathie Townsend, Walt Rawls, Tony Fabrello, and Tom Reynolds**). Thank you to all who donated to this

special project. The astroturf that was obtained for free after the Super Bowl was determined to not be usable and was disposed earlier in the year.

**Signage** – Replaced the faded handicap and no parking signs in the parking lot. Installed two “Welcome Visitor” signs in parking lot for Evangelism team. Installed “No Thru Traffic” signs on our driveways in an attempt to curtail people from using our parking lot as a shortcut. Repaired message board sign on Litchfield Road. Thank you to **Dave Bruce, Tony Fabrello, Randy Heibel, Jerry Globe, Rob Hammerling, and Dave Gregor** for their assistance with these items.

**Tree Maintenance** – Two dead trees in the North Parking Lot were removed. Also, the trees to the south of Building B were trimmed by our landscape company. They also performed necessary trimming of our other trees and palms.

**Pocket Gophers** – We found a contractor to help us address our pocket gopher problem. He provided several treatments which appeared to help and we continue to monitor.

## **Technology (IT and AV)**

**Computers and Software** – We had to upgrade our office computers to Windows 11 this year. We were able to upgrade with the current hardware for the primary office computers. We had an older desktop computer and an older laptop we had to retire and recycle. A refurbished Windows 11 laptop was donated for general church use. We will likely need to replace the worship laptop used during services in 2026. This also required us to upgrade our Servant Keeper church management software.

**Data Records** – We continue to work to clean up our church membership records and the information in our church directory.

**Copier** – Jamming problems had to be resolved with our contractor who replaced a major part of the hardware.

**AV/Streaming** – There continues to be a steady need for streaming our services by homebound, ill, and remote members. Our volunteer sound booth team (**Jim Hill, Jan/Wes Yost, Magan Ratalsky, Cole Stafford, Stacy Anderson, Jim Erickson, and Ruben Salgado**) continue to support this ministry.

**Building A - AV** - The projector had to be replaced with a refurbished unit. The audio system that had been disconnected due to the sewer work was reconnected and is now available for use by the other congregation.

Respectfully Submitted – Jim Erickson

## Education

Sunday School has continued on the 2<sup>nd</sup> and 4<sup>th</sup> Sunday of every month, after the gospel and for the duration of the sermon. The average bi-weekly attendance has increased to 8 and now includes +1 new family. The Sunday School content is created by reviewing the weekly gospel message from the CELC announcements and finding an age-appropriate way to teach. The content is often partnered with an activity, craft, or worksheet, and the congregation has been very gracious in providing all of the supplies needed to stock the classroom.

Our group coordinated the annual Easter egg hunt and Christmas program during the holiday seasons. We also partnered with Olga and the youth group to participate in other activities throughout the year including the car wash, and the City for Hope 5K.

We continue to utilize the 'kids' corner' in the sanctuary for those weeks we do not have Sunday School. This has become a very popular space for the children and youth, and we are always bringing new items to engage and entertain the children.

Thank you,

Magan Ratalsky

## Evangelism

**Evangelism goals** set for 2025 were focused on being both **relevant and visible** in welcoming members and visitors. Specifically, we set out to create a focused **WELCOME CENTER** upon entering the sanctuary, extending an extravagant welcome to all, hold new member orientations, and continue to maintain regular contact with our membership.

As we experimented with how to focus attention and lessen traffic at the entry doors and yet be visible and relevant, we have settled on our **welcome table and cart** be set on the left side of the entry with additional tables as needed for special event sign-ups and activities. This allows for a clear place to get information and the sign-up clip boards.

A big thank you to Judy Turnen for continuing her commitment to keep **IN TOUCH** via calls, cards and contact with members in need and seasonal greetings at Christmas and Easter. In addition, Judy continues to hold the **BOOK EXCHANGE** once a month and arranged a **WOMEN'S GATHERING** attended by approximately 30 women that provided an opportunity for fellowship and a history of CELC plus touring our complete campus facilities

Members were very generous in offering Sunday morning time to be **GREETERS**. We determined to have greeters just greet and ushers just usher. Carol and Sandy developed specific **GUIDELINES for GREETERS** and **GUIDELINES FOR USHERS**. For Greeters we decided to

provide one outside greeter, as weather permits, one or a couple inside, and one sitting greeter at the Welcome Center area to answer questions. At times we have had a roving greeter to interact with those who might arrive early. We made note to especially greet and welcome back in the late fall our **seasonal members/attenders**.

**Thank you** to the following members for their **ministry of greeting** this past year: The Blakenship Family, Dan McDonald, Dave Gregor, Mary Ellen Crane, Valerie Ellis, Olga and John Blanchard, Jeaneite Lorenz, Rae Valabek, Charla Seitz, Kathy and John Williams, Sue and Bob Addy, Jerry and Renee Myers Globe, Kay Jors, Carol and Dave Moonan, Faith Hanley, Rocky and Maria DeRush, Norm and Barb Johnson, Ellory Christianson, Cher Johnson, Fred and Jo-Ann Wordell, Ken and Karen Olson, Rosemary Vanasco and Tom Reynolds, Marian See, Judy Turnen.

**BETTER SIGNAGE:** Dave Bruce created a new carved WELCOME CENTER SIGN for the wooden cart and Jim Erickson did the research to order and install two specifically designated **Parking Spots for Visitors**.

**NEW MEMBER ORIENTATIONS** were held in January and October. We reviewed visitor cards and mailed 36 personal letters inviting our guests who provided address to attend the fall orientation led by Pastor Kim. Welcome **NEW MEMBERS:** Valerie & Greg Ellis, Margaret Cady, Valerie Cosgrove, Leslie Bieler, Samantha and Farouk Salah & sons, Kathy Fregeau, Mike See, Sheila Lund, Maria and Rocky DeRush, Julie Paisley.

**NAME TAGS:** As we near a time of welcoming a new pastor, name tags will be even more helpful in our attempts to know each other by name. We will attempt to order new name tags and replacement name tags about twice a year. As the cost increases, we ask for a replacement donation of \$8.00.

**PRAYER VIGIL GATHERING for PASTOR TO BE.** We held two Prayer Gatherings, the first was well attended and the other less attended but sincere and sharing was offered by all. We will continue to gather as often as possible monthly believing that God is preparing someone to come to us. We pray for our patience and gratitude. We pray for those in discernment to carefully consider us. We are thankful for the Transition Team work, and we pray that as a congregation will be fully prepared to welcome the new pastor with open hearts, minds and service. Please join us after an announced Sunday time following our worship service in the months to come.

Submitted with gratitude and sincere care for the members and guests of CELC.

Sandra Gabel

## Fellowship

### March/April

Lent Soup Dinners - average attendance was 20-25. Plenty of yummy soups, salads and desserts were provided. Thank you to all who took the time to share their favorite items! Lots of good conversations and fellowship! Looking forward to next year, maybe something extra special !!!

Seder Dinner and Demonstration~ Collected \$400, expenses \$233.68. Unfortunately, we turned away a few people who did not sign up. There is a very specific table setup for the dinner and demonstration. WE WILL NEVER do that again. We will always set up extra seating so we will be able to welcome everyone! We even had a family from another church who wanted to experience the Seder Ceremony. They even stayed and helped with the cleanup! Thank you, Carol Moonan, for making our meal complete with matzah ball soup. This event is also going to be scheduled for next year.

Easter Breakfast - About 115 attended! The free will offering was \$374 and the expenses were \$355. A GREAT BIG THANK YOU! To everyone who donated food items and egg casseroles. I believe everyone enjoyed the variety of items offered, I know NO ONE went away hungry!! Also THANK YOU ALL who helped decorate and helped clean up so quickly!!! THANK YOU, Ladies who made and donated the Easter Baskets, Carol Moonan, Ann Bruce, Sharoll Blodgett, Faith Hanley, Karen Olson and Valerie Ellis. We collected \$288!

### July

Pastor Kim's Birthday Celebration - Most everyone stayed after church service to enjoy hot dogs, fruit kabobs and brownies and wished Pastor Kim [happy birthday](#)!!

### October

Fall Festival and Quilting for Others Boutique - A great time was scheduled with the boutique, brats, German potato salad, cake walk and kids crafts. Unfortunately, I broke my foot, and it was canceled.

### November

Quilting for other's boutique - lots of different items were sold to happy shoppers. Over \$500 was raised to help with supplies and machine maintenance/repairs. The quilters have donated @ 75 quilts to local women's shelters and newborns. They also donated 10 lap quilts for the Youth group to hand out at a senior center. Lots of smiles and thank yous.... And a few tears too!

Multi-Church Thanksgiving pie - Social~ The church was full, with members from 5 churches attending and participating in the service. Absolutely lovely! We had an abundance of pies and cheesecake!! And a few homemade specialties! Absolutely a success! Thank you, Olga, for getting this together!!!

## **December**

Advent Dinner & Quilters boutique - 75 tickets sold, \$2205, expenses \$1059.65. Lavazza coffee/expresso machine raffle ticket sold, \$185. Thank you, Jessica Emerson, for the donation and thank you Valerie Cosgrove for walking around table by table and selling the tickets!!! The quilters sold about \$150 worth of items. The social hour, 5-6pm was enjoyable with a variety of appetizers and wine. The children were entertained with crafts and supervised by Patsy and Emilie Blankenship, thank you girls! Dinner of brisket and salmon was again enjoyed by everyone. Pastor Kim said a wonderful prayer and Faith Hanley's mother sang the Lord's Prayer. Jim Erickson provided us with a cozy fire and lovely soft jazz Christmas music. Everyone enjoyed the background music while eating and the conversations at their tables. The evening ended with dessert and Christmas carols... a good time was had by all! Thanks to everyone who joined together for clean up!

\$1000 from the advent dinner and the money from Easter basket raffle and Seder dinner are used for the front landscaping.

Happy New Year to everyone!!!

Valerie Ellis

## **Health**

1. Monthly AED checks
2. Restocked first aid kits
3. Monthly newsletter items
4. Offered blood pressure checks 11 out of 12 months with an average of 4-6 participants
5. Adult Hygiene Program:

We received a \$2500.00 grant from West Valley Lutheran Thrift Store for purchasing and distributing personal hygiene products to our outreach clients.

To date we have spent \$743.00 toward this program. To date we have distributed 62 packages of product the 1<sup>st</sup> Tuesday of every month.

6. Planned a class for February 2026: Safeguarding God's Children.

7. Drafted a policy for all staff working with children and youth to take the Safeguarding God's Children class. This policy will be presented to the council for review and approval in December 2025.
8. Worked with Su Erickson to purge and help organize the building B back office for multiple discipline use.
9. Request to have the First Aid Box in Building A to be moved to a cabinet marked with a sign.
10. Purchased an additional first aid kit for Building A chapel restroom

Kathy Williams  
Health Consultant

## Outreach

*For I was hungry and you gave me something to eat, I was thirsty and you gave me something to drink, I was a stranger and you invited me in, Matthew 25:35*

- In 2025, CELC supported the following ministries through our benevolence giving: Lutheran Social Services of the Southwest (LSS-SW), Mosaic, Grace Lutheran Church Pancake Breakfast and Connections ministry, and the Grand Canyon Synod. The youth collected monetary donations for ELCA Good Gifts.
- CELC provided overnight lodging to participants in the LSS-SW **I-HELP (Interfaith Homeless Emergency Lodging Program)** twice a week until LSS-SW closed the program at the end of March. CELC immediately joined with the SW Valley churches to forge a new path for the program. Pr. Kim and I met with leaders of Avondale Baptist Church (ABC), AZ Vineyard, Refinery, New Foundation, and St. Peter's Episcopal Church to work out a new structure for the program. The biggest obstacles to restarting this much needed program were to obtain insurance and funding. Several grants have been awarded, and fundraising opportunities are being explored. We connected with AZ Community Impact, and they serve as our parent organization. In December we were notified that we could obtain insurance and restart in early 2026. In October, we began paying Michelle Harrison as our Program Director and Case Manager. Church volunteer teams are being formed and trained to assist with the program and night monitors are being hired. Thank you to all who have provided meals and laundry services for this transition program.
- Led by Team Captain Grace Blankenship, CELC formed a team of walkers to raise funds for the City of Hope's **2025 Walk for Hope**. Twelve people walked in honor of or in

memory of friends and relatives afflicted by cancer and raised \$1585 for our neighbor City of Hope to help support cancer research.

- Members purchased **Christmas gifts** for the **Salvation Army Angel Tree**. A big thank you to Kathy & Mike Coyle for organizing, collecting, and delivering the gifts. Pastor Kim delivered donated robes, slippers, and toys to **LSS-SW**.
- CELC provided regular **meeting space for support groups**: AA, AZTypo, Bosom Buddies, Alzheimer's Support group (zoom meetings mostly), a Mental Health Support Group and Duet Caregivers and Grandparent support groups.
- The **CELC Outreach Food Pantry** is affiliated with St. Mary's Food Bank which is also a part of the Feeding America program. The CELC food pantry is fully licensed by Maricopa County, and we continue to receive an "A" rating on our twice-yearly kitchen/pantry inspections. St. Mary's also inspects our kitchen and pantry annually.

The CELC Outreach Ministry through its Tuesday food distribution program provided over **3236 food boxes** and provided food for over **15264 individuals** during this past year. These boxes provided food for an average of 269 families per month. We saw a decline in the number of families and individuals served during the first half of the year. During the 3<sup>rd</sup> and 4<sup>th</sup> quarters, there was an increase, due in part to SNAP benefits being stopped temporarily and the holidays.

Thank you for everyone's donations to Outreach this year. The Outreach income of \$43,696.85 included \$14,000 donations to the IHELP program, of which, most was sent to AZ Community Impact to be deposited in the IHELP account. We were able to move \$8000 to our designated fund at the end of the year. We keep an eye on our aging van. After two flat tires, new tires were purchased to keep us running smoothly. We replaced the freezer that quit working.

Food was obtained from St. Mary's through weekly truck deliveries, on the floor shopping and purchases. We distributed over 197,000 lbs. of food and beverages this year: St. Mary's - 162410.16 lbs., Basha's - 19495 lbs., Panera - 4968 lbs., Wildflower - 7501.88 lbs., and over 6082.68 lbs. from our congregation and community. **Community partners** held holiday food drives to add food to our pantry shelves. Lennox Industries collected and donated 1100 lbs. of food Thanksgiving week and Goodyear Police Dept. surprised us with a donation of 370 lbs. of food, including 15 turkeys, and Clayco Construction donated 1259 lbs. of food and water in December. The 2025 Souper Bowl event raised \$334. For the 4<sup>th</sup> year in a row, Cheerios took top honors in the 2025 March Madness Bowl. We raised \$214.85 (+44 boxes of cereal) for our food pantry.

**Thank you to the 55 volunteers** that participated in the program to set up tables, weigh, sort, and store food, register households, fill boxes, drive to St. Mary's weekly, pick-up food from our grocery rescue partners (Panera and Basha's), clean and sanitize tables and the kitchen

equipment, direct traffic in the parking lot, and distribute boxes. The CELC youth learned about our food pantry program and volunteered all summer and during school breaks.

**Tuesday Boutique sales** of donated furniture, clothes and household items totaled more than \$4200. Funds were used to buy supplies and food for the program. A special thanks to Ardyce Durand and volunteers for sorting, pricing, and selling the donated goods.

We used funds from our West Valley Lutheran Thrift Shop grant to purchase and provide **adult hygiene products** to our Outreach households and I-HELP participants. Thank you to Kathy Williams, Health Coordinator, for purchasing and distributing the products monthly.

*Respectfully submitted by Su Erickson*

## **Quilting For Others**

In 2025, Quilting for Others provided 80 baby quilts as well as a few hats and booties, to be donated to newborns at the County hospital, through the Assistance League of Phoenix. Some of the quilts were provided by members of CELC and outside sources, as well as those made by the group itself.

Ten lap quilts were made for the youth group to gift to residents of an Assisted Living Facility they were visiting at Christmas time. There were three baptisms during the year, and each child received a quilt. We also presented a graduation quilt to one High School graduate.

Fabric, used cotton sheets, and monetary donations are always welcome. Proceeds from the fall craft fair are used to cover the main expense of purchasing batting for the quilts. This year additional funds were donated to church projects as well.

Quilting For Others welcomes anyone interested in supporting our goal of reaching out to others, regardless of sewing skills. There are tasks for the experienced seamstress, as well as for someone who can thread a needle or wield a pair of scissors. Please join us in the Fellowship Hall in Building A, Monday mornings from 9-12 noon.

Karen Olson

## **Stewardship**

2025 has been a productive year for Christ Evangelical Lutheran Church under the leadership of Interim Pastor Kim Sterner and our council. We completed the transition process and put together our Ministry Site Profile in anticipation of attracting a new pastor to lead us.

As the council member responsible for Stewardship and a member of the financial team, it has been easy to monitor the income and expenses of our church. 2025 has been a year of increases both in membership and in giving. Our Mission Spending Plan continues to reflect sound fiscal management. We have also continued to receive money from can and bottle recycling (\$664.71), Fry's Rewards members (\$179.91) and Thrivent Choice Dollars (\$227).

In November I presented a "Temple Talk" regarding stewardship in which I talked about sharing our time, treasures and talents. There are many opportunities for involvement in this congregation, and your gift of time is important to all of us. I also talked about some of the maintenance challenges that we face in our aging building – the parking lot, landscaping, painting, etc. We also have an active Youth Group that would like to attend summer camp, and we plan to continue our participation in the I-Help program if and when it is restarted. We have received a few special donations for some of these projects and the landscaping in front of Building A has already been completed.

I would like to thank all of the members of our congregation, our council members and Pastor Kim for helping us to continue to move forward in faith and love.

Respectfully submitted,

Ann Bruce

## **Worship and Music**

The people who assist with our Worship Service are serving quietly, behind the scenes and you might not even notice them. We have a faithful crew of Altar Guild and welcomed 3 new members this year – Norma Heinrich, Sue Addy and Julie Paisley. We are grateful for our Communion Assistants, especially our regular weekly assistants, Patsy and Emily Blankenship.

Judy Wandler faithfully keeps track of the colors of the church seasons and keeps our banners matching that color. Kathie Townsend now arranges our flowers each week, also beautifully coordinated with the season of the church year.

Ushers are essential and thank you for the many “yes” responses when you were asked to help! Faith Hanley and Emma are our regular weekly Ushers, with Walter Rawls ready to step in as needed. New ushers are always welcome – check in with me if you have been wishing to usher and have not yet had an opportunity to do so, and we will make it happen soon!

Readers are coordinated by Sharoll Blodgett and she keeps the lists sent in promptly and is a reader herself.

Music, the other part of this committee, is expertly handled by Miloy. This is something we all look forward to each week and are grateful for Miloy’s skills, talents, and creativity!

Thank you ALL for your faithful service!

Carol Moonan

## **Youth**

We had a great year with participation from our church’s youth.

This year, the youth group organized a variety of engaging activities that fostered strong friendships and personal growth among its members. Highlights included community service projects, leadership workshops, and memorable social events that brought everyone together in a spirit of collaboration and fun.

Our ages ranged from 17 to the smallest of them being 4 at the car wash. Each child contributed by cleaning a goat pen to making posters. Each one pursued each event with enthusiasm. Our car wash was the wettest. They had the task of trying to update phones and computers with Jim’s help. Our greatest endeavor was to collect toys for the Domestic Violence Shelter. It was a huge success and was appreciated by the shelter. They participated in community walks. None of this could have happened without the church’s support. We thank the quilters for making lap quilts for 10 assisted living residents, Pastor Kim, Jennifer Cole, Cher Johnson (ideas), Megan and John for the encouragement and participation at the events. We appreciate your support.

Submitted,

Olga Blanchard

## **CELC Staff 2025**

Interim Pastor: Kim Sterner

Director of Worship & Music: Miloy Canete

Facility Manager: Jonathan Gonzalez

Administrator: John Brown

Finance team: Ann Bruce & Sharoll Blodgett

It/Tech Support: Jim Erickson

## **Audit Committee**

2025 (audit 2024 books) Ron Nawrocki,  
Bob Muehling (appointed) and Mike Coyle (appointed)

## **2025 Council Members**

President: Carol Moonan

Vice President: Ann Bruce

Secretary: Jo-Ann Wordell (through Oct); Sue Addy

Treasurer: John Brown

Education: Magan Ratalsky

Evangelism: Sandy Gabel

Facilities & Maintenance: Vacant, Jim Erickson Coordinating

Fellowship: Valerie Ellis

Health: Kathy Williams

Outreach: Su Erickson

Stewardship: Ann Bruce

Worship: Carol Moonan

Youth: Olga Blanchard

## **2025 Synod Delegates**

Gayle Denny and Jim Hill

### **Transition Team**

Transition Coach: Pastor Phil Gustafson

Ann Bruce, Chair

Olga Blanchard

Patsy Blankenship

Jim Erickson

Stevie Henderson

Karen Olson

Judy Turpen (through Oct.)

### **Call Committee**

Connie Sornsin, Chair

Jennifer Cole

Kathy Coyle

Jim Erickson

Tony Fabrello

Rae Valabek

Fred Wordell

## 2025 Demographics

### Baptisms

Autumn Elizabeth Britts July 27

Zayn Malcolm Salah November 30

Johnathan Paul Scott August 3

### Deaths

Virginia Postle January 30

Howard Jenson June 21

Geraldine Fisher July 13

John Seitz October 21

David Riese August 23

### New Members

Margaret Cady January 19

Fred (Rocky) & Maria DeRush October 26

Valerie Cosgrove January 19

Sheila Lund October 26

Julie Paisley October 26

Farouk Salah November 30

Mike See October 26

### Transferred in

Valerie & Greg Ellis January 19

Samanth (Fregeau) Salah November 30

Kathy Fregeau October 26

Malek Salah November 30 (baptized child,  
not confirmed yet)

Leslie Bieler November 30

## YEAR 2025 WEEKLY ATTENDANCE

DATE	9:00 a.m. Worship Service	Special Worship Service	
5-Jan	127		
12-Jan	145		
19-Jan	136		
26-Jan	146		
<b>MONTHLY AVERAGE</b>	<b>139</b>		
2-Feb	150		
9-Feb	160		
16-Feb	168		
23-Feb	150		
<b>MONTHLY AVERAGE</b>	<b>157</b>		
2-Mar	145		
5-Mar		Ash Wednesday	96
9-Mar	159		
12-Mar		Lent	31
16-Mar	159		
19-Mar		Lent	40
23-Mar	160		
26-Mar		Lent	32
<b>MONTHLY AVERAGE</b>	<b>156</b>		
2-Apr		Lent	26
6-Apr	159		
9-Apr		Lent	21
13-Apr	191	Palm Sunday	
17-Apr		Maunday Thursday	27
18-Apr		Good Friday	61
20-Apr	50	Sunrise Service	
20-Apr	200	Easter Sunday	
27-Apr	135		
<b>MONTHLY AVERAGE</b>	<b>184</b>	<b>LENT AVERAGE</b>	<b>42</b>
4-May	128		
11-May	125		
18-May	90		
25-May	90		
<b>MONTHLY AVERAGE</b>	<b>108</b>		
1-Jun	100		
8-Jun	83		
15-Jun	123		
22-Jun	92		
29-Jun	107		
<b>MONTHLY AVERAGE</b>	<b>101</b>		

6-Jul	87
13-Jul	91
20-Jul	85
27-Jul	90
<b>MONTHLY AVERAGE</b>	<b>88</b>

3-Aug	109
10-Aug	65
17-Aug	93
24-Aug	107
31-Aug	91
<b>MONTHLY AVERAGE</b>	<b>93</b>

7-Sep	100
14-Sep	94
21-Sep	105
28-Sep	91
<b>MONTHLY AVERAGE</b>	<b>98</b>

5-Oct	101
12-Oct	90
19-Oct	111
26-Oct	138
<b>MONTHLY AVERAGE</b>	<b>110</b>

2-Nov	131
9-Nov	149
16-Nov	140
23-Nov	145
30-Nov	154
<b>MONTHLY AVERAGE</b>	<b>149</b>

7-Dec	144
14-Dec	195
21-Dec	193
24-Dec	
24-Dec	
25-Dec	
28-Dec	114
<b>MONTHLY AVERAGE</b>	<b>162</b>

Christmas Eve	87
Christmas Eve	111
Cristmas Day	21

<b>Christmas Eve/Day TOTAL</b>	<b>219</b>
--------------------------------	------------



## Christ Evangelical Lutheran Church

## Balance Sheet

As of December 31, 2025

01/12/26

Cash Basis

	<u>Dec 31, 25</u>
<b>ASSETS</b>	
<b>Current Assets</b>	
<b>Checking/Savings</b>	
10100 · Chase Operating	52,748.13
10200 · Chase Reserve	10,050.00
10300 · Chase Designated	22,363.00
10400 · MIF Reserve	119.71
10405 · MIF Facilities	348.88
10505 · Vanguard Brokerage Account	20,200.73
10600 · LiveOak Savings	41,662.76
10650 · LiveOak Savings Designated	40,000.00
<b>Total Checking/Savings</b>	<u>187,493.21</u>
<b>Total Current Assets</b>	187,493.21
<b>Fixed Assets</b>	
150100 · Property & Contents	3,250,000.00
150200 · Vehicle	3,000.00
<b>Total Fixed Assets</b>	<u>3,253,000.00</u>
<b>TOTAL ASSETS</b>	<u><u>3,440,493.21</u></u>
<b>LIABILITIES &amp; EQUITY</b>	
<b>Liabilities</b>	
<b>Long Term Liabilities</b>	
29500 · MIF Loan #1	708,329.55
<b>Total Long Term Liabilities</b>	<u>708,329.55</u>
<b>Total Liabilities</b>	708,329.55
<b>Equity</b>	
30000 · Opening Balance Equity	1,808,760.37
30100 · Designated Fund Balances	62,363.00
32000 · Unrestricted Net Assets	125,130.21
330000 · Mortgage reductions	669,301.57
Net Income	66,608.51
<b>Total Equity</b>	<u>2,732,163.66</u>
<b>TOTAL LIABILITIES &amp; EQUITY</b>	<u><u>3,440,493.21</u></u>

**Christ Evangelical Lutheran Church**  
**Profit & Loss Budget vs. Actual**  
 January through December 2025

	Jan - Dec 25	Budget	\$ Over Budget
<b>Ordinary Income/Expense</b>			
<b>Income</b>			
50100 · General Fund	323,031	325,000	-1,969
50300 · Outreach	22,177	26,700	-4,523
50400 · Rent	66,001	65,400	601
50600 · Interest income	1,665		
50605 · MIF Reserve Interest	0		
50606 · MIF Facility Interest	1		
<b>Total Income</b>	<u>412,876</u>	<u>417,100</u>	<u>-4,224</u>
<b>Gross Profit</b>	412,876	417,100	-4,224
<b>Expense</b>			
60100 · Salaries	106,629	109,860	-3,231
60200 · Payroll Taxes	6,375	4,560	1,815
60300 · Pastor's Fund	1,403	6,400	-4,997
60400 · Benevolence	17,184	15,020	2,164
60500 · Mortgages	70,539	70,560	-21
60600 · Utilities	61,661	58,332	3,329
60700 · Property Maintenance	45,568	55,000	-9,432
60800 · Office	22,748	22,412	336
60900 · Music & Worship	10,626	11,000	-374
61000 · Altar Guild	1,722	1,320	402
61100 · Evangelism	801	300	501
61200 · Education	632	750	-118
61300 · Fellowship/Quilting	1,937	1,500	437
61400 · Stewardship	138	240	-102
61500 · Council	1,752	1,500	252
61600 · Health Ministry	647	240	407
61700 · Youth Ministry	272	120	152
61800 · Outreach Ministry	19,855	26,700	-6,845
<b>Total Expense</b>	<u>370,490</u>	<u>385,814</u>	<u>-15,324</u>
<b>Net Ordinary Income</b>	42,386	31,286	11,100
<b>Other Income/Expense</b>			
<b>Other Income</b>			
70100 · Designated Receipts	37,780		
<b>Total Other Income</b>	<u>37,780</u>		
<b>Other Expense</b>			
70200 · Designated Expenditures	13,558		
<b>Total Other Expense</b>	<u>13,558</u>		
<b>Net Other Income</b>	<u>24,222</u>		
<b>Net Income</b>	<u><u>66,609</u></u>	<u><u>31,286</u></u>	<u><u>35,323</u></u>

# CELC CASH ON HAND STATEMENT

DECEMBER 31, 2025

	<u>BALANCE</u>
Chase Designated	\$22,363.00
Chase Operating	\$52,748.13
Chase Reserve	\$10,050.00
MIF Reserve	\$119.71
MIF Facilities	\$348.88
Vanguard Brokerage Account	\$20,200.73
LiveOak Savings	\$41,662.76
Live Oak Savings Designated	\$40,000.00
<b><u>TOTAL CASH ON HAND</u></b>	<b>\$187,493.21</b>

## **DESIGNATED**

Outreach Fund/Quilting	\$28,106.97
Solar Fund	\$18,616.18
Discretionary Fund	\$15,639.85
<b><u>TOTAL DESIGNATED FUNDS</u></b>	<b>\$62,363.00</b>

**2026 MISSION SPENDING PLAN**

**INCOME**

GL CODE CATEGORY	2024 ACTUAL	2025 BUDGET	2025 ACTUAL	2026 BUDGET
50100 General Fund	\$ 327,693	\$ 325,000	\$ 323,031	\$ 325,000
50300 Outreach	27,670	26,700	22,177	27,300
50400 Rent	63,801	65,400	66,001	66,120
50600 Interest Income	-	-	1,665	2,400
50605 MIF Reserve Interest	5	-	0	-
50606 MIF Facility Interest	1	-	1	-
<b>TOTAL INCOME</b>	<b>\$ 419,170</b>	<b>\$ 417,100</b>	<b>\$ 412,876</b>	<b>\$ 420,820</b>

**EXPENSES**

GL CODE CATEGORY	2024 ACTUAL	2025 BUDGET	2025 ACTUAL	2026 BUDGET
60100 Salaries	\$ 160,422	\$ 109,860	\$ 106,629	\$ 142,020
60200 Payroll Taxes	5,455	4,560	6,375	9,420
60300 Pastor's Fund	1,930	6,400	1,403	6,600
60400 Benevolence	14,530	15,020	17,184	17,600
60500 Mortgages	70,539	70,560	70,539	70,560
60600 Utilities	54,690	58,332	61,661	64,630
60700 Property Maintenance	53,406	55,000	45,568	46,502
60800 Office	20,436	22,412	22,748	22,060
60900 Music & Worship	11,035	11,000	10,626	11,530
61000 Altar Guild	1,580	1,320	1,722	1,740
61100 Evangelism	35	300	801	840
61200 Education	681	750	632	700
61300 Fellowship/Quilting	895	1,500	1,937	2,040
61400 Stewardship	143	240	138	240
61500 Council	440	1,500	1,752	2,000
61600 Health Ministry	111	240	647	720
61700 Youth Ministry	-	120	272	300
61800 Outreach Ministry	21,328	26,700	19,855	21,000
<b>TOTAL EXPENSES</b>	<b>417,654</b>	<b>385,814</b>	<b>370,490</b>	<b>420,502</b>
<b>TOTAL GAIN / (LOSS)</b>	<b>\$ 1,516</b>	<b>\$ 31,286</b>	<b>\$ 42,386</b>	<b>\$ 318</b>

2025 ACT vs 2025 BDDT	2025 ACT vs 2024 ACT	2026 BDDT vs 2025 ACT
\$ (1,969)	\$ (4,662)	\$ 1,969
(4,523)	(5,493)	5,123
601	2,200	119
1,665	1,665	735
0	(5)	(0)
1	0	(1)
<b>\$ (4,224)</b>	<b>\$ (6,294)</b>	<b>\$ 7,944</b>

2025 ACT vs 2025 BDDT	2025 ACT vs 2024 ACT	2026 BDDT vs 2025 ACT
\$ (3,231)	\$ (53,793)	\$ 35,391
1,815	920	3,045
(4,997)	(527)	5,197
2,164	2,654	416
(21)	-	21
3,329	6,971	2,969
(9,432)	(7,838)	934
336	2,313	(688)
(374)	(409)	904
402	143	18
501	766	39
(118)	(49)	68
437	1,043	103
(102)	(5)	102
252	1,312	248
407	536	73
152	272	28
(6,845)	(1,473)	1,145
<b>(15,324)</b>	<b>(47,164)</b>	<b>50,012</b>
<b>\$ 11,100</b>	<b>\$ 40,869</b>	<b>\$ (42,068)</b>

**CELC 2026 OPERATING BUDGET**

	JAN	FEB	MAR	APR	MAY	JUNE	JULY	AUG	SEPT	OCT	NOV	DEC	TOTAL
	Jan	Feb	Mar	Apr	May	June	July	Aug	Sept	Oct	Nov	Dec	Jan-Dec 25
<b>INCOME</b>													
50100 - General Fund	\$ 32,000	\$ 25,000	\$ 26,000	\$ 29,000	\$ 25,000	\$ 28,000	\$ 22,000	\$ 16,000	\$ 29,000	\$ 24,000	\$ 33,000	\$ 36,000	\$ 325,000
50300 - Outreach	\$ 2,275	\$ 2,275	\$ 2,275	\$ 2,275	\$ 2,275	\$ 2,275	\$ 2,275	\$ 2,275	\$ 2,275	\$ 2,275	\$ 2,275	\$ 2,275	\$ 27,300
50400 - Rent - Other	\$ 5,510	\$ 5,510	\$ 5,510	\$ 5,510	\$ 5,510	\$ 5,510	\$ 5,510	\$ 5,510	\$ 5,510	\$ 5,510	\$ 5,510	\$ 5,510	\$ 66,120
50605 - MIF Reserve Interest	\$ 200	\$ 200	\$ 200	\$ 200	\$ 200	\$ 200	\$ 200	\$ 200	\$ 200	\$ 200	\$ 200	\$ 200	\$ 2,400
50806 - MIF Facility Interest	\$ -	\$ -	\$ -	\$ -	\$ -	\$ -	\$ -	\$ -	\$ -	\$ -	\$ -	\$ -	\$ -
<b>TOTAL INCOME</b>	<b>\$ 39,985</b>	<b>\$ 32,985</b>	<b>\$ 33,985</b>	<b>\$ 36,985</b>	<b>\$ 32,985</b>	<b>\$ 35,985</b>	<b>\$ 29,985</b>	<b>\$ 23,985</b>	<b>\$ 36,985</b>	<b>\$ 31,985</b>	<b>\$ 40,985</b>	<b>\$ 43,985</b>	<b>\$ 420,820</b>
<b>EXPENSE</b>													
60110 - Pastor	\$ 4,000	\$ 4,000	\$ 4,000	\$ 4,000	\$ 4,000	\$ 4,000	\$ 4,000	\$ 4,000	\$ 4,000	\$ 4,000	\$ 4,000	\$ 4,000	\$ 48,000
60111 - Pastor Salary	\$ 1,000	\$ 1,000	\$ 1,000	\$ 1,000	\$ 1,000	\$ 1,000	\$ 1,000	\$ 1,000	\$ 1,000	\$ 1,000	\$ 1,000	\$ 1,000	\$ 12,000
60112 - Housing	\$ 400	\$ 400	\$ 400	\$ 400	\$ 400	\$ 400	\$ 400	\$ 400	\$ 400	\$ 400	\$ 400	\$ 400	\$ 4,800
60113 - Pension	\$ 100	\$ 100	\$ 100	\$ 100	\$ 100	\$ 100	\$ 100	\$ 100	\$ 100	\$ 100	\$ 100	\$ 100	\$ 1,200
60114 - Telephone Reimbursement	\$ 5,500	\$ 5,500	\$ 5,500	\$ 5,500	\$ 5,500	\$ 5,500	\$ 5,500	\$ 5,500	\$ 5,500	\$ 5,500	\$ 5,500	\$ 5,500	\$ 66,000
Total 60110 - Pastor	\$ 300	\$ 300	\$ 300	\$ 300	\$ 300	\$ 300	\$ 300	\$ 300	\$ 300	\$ 300	\$ 300	\$ 300	\$ 3,600
60130 - Information Mgr	\$ 2,815	\$ 2,815	\$ 2,815	\$ 2,815	\$ 2,815	\$ 2,815	\$ 2,815	\$ 2,815	\$ 2,815	\$ 2,815	\$ 2,815	\$ 2,815	\$ 33,780
60120 - Music Director	\$ -	\$ -	\$ -	\$ -	\$ -	\$ -	\$ -	\$ -	\$ -	\$ -	\$ -	\$ -	\$ -
60121 - Medical Music Director	\$ 3,220	\$ 3,220	\$ 3,220	\$ 3,220	\$ 3,220	\$ 3,220	\$ 3,220	\$ 3,220	\$ 3,220	\$ 3,220	\$ 3,220	\$ 3,220	\$ 38,640
60140 - Custodian	\$ 11,835	\$ 11,835	\$ 11,835	\$ 11,835	\$ 11,835	\$ 11,835	\$ 11,835	\$ 11,835	\$ 11,835	\$ 11,835	\$ 11,835	\$ 11,835	\$ 142,020
Total 60100 - Salaries	\$ 785	\$ 785	\$ 785	\$ 785	\$ 785	\$ 785	\$ 785	\$ 785	\$ 785	\$ 785	\$ 785	\$ 785	\$ 9,420
60200 - Payroll Taxes	\$ -	\$ 50	\$ -	\$ -	\$ 200	\$ -	\$ 50	\$ -	\$ -	\$ 50	\$ 50	\$ -	\$ 600
60310 - Education	\$ 417	\$ 417	\$ 417	\$ 417	\$ 417	\$ 417	\$ 417	\$ 417	\$ 417	\$ 417	\$ 417	\$ 417	\$ 5,000
60320 - Pastor's Fund Call Expense	\$ -	\$ 250	\$ -	\$ -	\$ 250	\$ -	\$ -	\$ -	\$ -	\$ -	\$ 250	\$ -	\$ 1,000
60325 - Pastoral Support	\$ 417	\$ 717	\$ 417	\$ 417	\$ 867	\$ 417	\$ 467	\$ 417	\$ 417	\$ 467	\$ 717	\$ 417	\$ 6,600
Total 60300 - Pastor's Fund	\$ 300	\$ 300	\$ 300	\$ 300	\$ 300	\$ 300	\$ 300	\$ 300	\$ 300	\$ 300	\$ 300	\$ 300	\$ 3,600
60410 - Lutheran Social Ministries	\$ -	\$ -	\$ 350	\$ 1,100	\$ -	\$ -	\$ -	\$ -	\$ -	\$ -	\$ 1,400	\$ 350	\$ 3,200
Mosaic & Grace Lutheran	\$ 900	\$ 900	\$ 900	\$ 900	\$ 900	\$ 900	\$ 900	\$ 900	\$ 900	\$ 900	\$ 900	\$ 900	\$ 10,800
60440 - Grand Canyon Synod	\$ 1,200	\$ 1,200	\$ 1,500	\$ 2,300	\$ 1,200	\$ 1,200	\$ 1,200	\$ 1,200	\$ 1,200	\$ 1,200	\$ 2,600	\$ 1,550	\$ 17,600
Total 60400 - Benevolence	\$ 5,880	\$ 5,880	\$ 5,880	\$ 5,880	\$ 5,880	\$ 5,880	\$ 5,880	\$ 5,880	\$ 5,880	\$ 5,880	\$ 5,880	\$ 5,880	\$ 70,560
60515 - Mission Investment Fund	\$ -	\$ -	\$ -	\$ -	\$ -	\$ -	\$ -	\$ -	\$ -	\$ -	\$ -	\$ -	\$ -
60525 - Principal Only	\$ 5,880	\$ 5,880	\$ 5,880	\$ 5,880	\$ 5,880	\$ 5,880	\$ 5,880	\$ 5,880	\$ 5,880	\$ 5,880	\$ 5,880	\$ 5,880	\$ 70,560
Total 60500 - Mortgages	\$ 2,450	\$ 2,450	\$ 2,450	\$ 2,450	\$ 2,450	\$ 2,450	\$ 2,450	\$ 2,450	\$ 2,450	\$ 2,450	\$ 2,450	\$ 2,450	\$ 29,400
60610 - APS	\$ 1,025	\$ 1,025	\$ 1,025	\$ 1,025	\$ 1,025	\$ 1,025	\$ 1,025	\$ 1,025	\$ 1,025	\$ 1,025	\$ 1,025	\$ 1,025	\$ 12,300
60620 - City of Goodyear	\$ 300	\$ 500	\$ 525	\$ 200	\$ 150	\$ 100	\$ 100	\$ 135	\$ 100	\$ 100	\$ 100	\$ 100	\$ 1,410
60630 - Southwest Gas	\$ 1,450	\$ 1,450	\$ 1,450	\$ 1,450	\$ 1,450	\$ 1,450	\$ 1,450	\$ 1,450	\$ 1,450	\$ 1,450	\$ 1,450	\$ 1,450	\$ 17,400
60640 - Waste Management	\$ 260	\$ 260	\$ 260	\$ 260	\$ 260	\$ 260	\$ 260	\$ 260	\$ 260	\$ 260	\$ 260	\$ 260	\$ 3,120
60650 - Cox Communications	\$ -	\$ -	\$ -	\$ -	\$ -	\$ -	\$ -	\$ -	\$ -	\$ -	\$ -	\$ -	\$ -
60670 - GreatAmerica Financial Services	\$ 5,485	\$ 5,985	\$ 5,710	\$ 5,385	\$ 5,335	\$ 5,285	\$ 5,285	\$ 5,320	\$ 5,285	\$ 5,285	\$ 5,285	\$ 5,285	\$ 64,630
Total 60600 - Utilities	\$ 65	\$ 1,300	\$ 65	\$ 65	\$ 1,400	\$ 65	\$ 65	\$ 1,200	\$ 65	\$ 65	\$ 2,400	\$ 65	\$ 6,820
60710 - Broadview Security	\$ 165	\$ 165	\$ 165	\$ 165	\$ 165	\$ 165	\$ 177	\$ 177	\$ 177	\$ 177	\$ 177	\$ 177	\$ 2,552
60720 - Terminex	\$ -	\$ -	\$ -	\$ -	\$ -	\$ -	\$ 1,100	\$ -	\$ 2,500	\$ -	\$ 900	\$ -	\$ 5,150
60725 - Metro Fire Equipment	\$ 890	\$ 890	\$ 890	\$ 890	\$ 890	\$ 890	\$ 890	\$ 890	\$ 890	\$ 890	\$ 890	\$ 890	\$ 10,680
60731 - RV Landscaping	\$ 50	\$ 50	\$ 50	\$ 50	\$ 50	\$ 50	\$ 50	\$ 50	\$ 50	\$ 50	\$ 50	\$ 50	\$ 600
60732 - Landscape Maint all other	\$ 500	\$ 500	\$ 500	\$ 500	\$ 500	\$ 500	\$ 500	\$ 500	\$ 500	\$ 500	\$ 500	\$ 500	\$ 6,000
60741 - Building "A"	\$ 700	\$ 700	\$ 700	\$ 700	\$ 700	\$ 700	\$ 700	\$ 700	\$ 700	\$ 700	\$ 700	\$ 700	\$ 8,400
60742 - Building "B"	\$ 225	\$ 225	\$ 225	\$ 225	\$ 225	\$ 225	\$ 225	\$ 225	\$ 225	\$ 225	\$ 225	\$ 225	\$ 2,700
60750 - Supplies	\$ 300	\$ 300	\$ 300	\$ 300	\$ 300	\$ 300	\$ 300	\$ 300	\$ 300	\$ 300	\$ 300	\$ 300	\$ 3,600
60760 - Building all other	\$ 2,895	\$ 4,130	\$ 2,895	\$ 2,895	\$ 4,230	\$ 4,042	\$ 4,007	\$ 4,042	\$ 5,407	\$ 2,907	\$ 6,142	\$ 2,907	\$ 46,502
Total 60700 - Property Maintenance	\$ 30	\$ 30	\$ 30	\$ 30	\$ 30	\$ 30	\$ 30	\$ 30	\$ 30	\$ 30	\$ 30	\$ 30	\$ 360
60810 - Supplies	\$ 5	\$ 5	\$ 5	\$ 5	\$ 5	\$ 5	\$ 5	\$ 5	\$ 5	\$ 5	\$ 5	\$ 5	\$ 60
60820 - Bank Charges	\$ 5	\$ 5	\$ 5	\$ 5	\$ 5	\$ 5	\$ 5	\$ 5	\$ 5	\$ 5	\$ 5	\$ 5	\$ 60
60842 - Postage	\$ 5	\$ 5	\$ 5	\$ 5	\$ 5	\$ 5	\$ 5	\$ 5	\$ 5	\$ 5	\$ 5	\$ 5	\$ 60

CELG 2026 OPERATING BUDGET

	JAN	FEB	MAR	APR	MAY	JUNE	JULY	AUG	SEPT	OCT	NOV	DEC	TOTAL
	Jan	Feb	Mar	Apr	May	June	July	Aug	Sept	Oct	Nov	Dec	Jan-Dec 25
60851 - Paragon (copy machine)	\$ 240	\$ 240	\$ 240	\$ 240	\$ 240	\$ 240	\$ 240	\$ 240	\$ 240	\$ 240	\$ 240	\$ 240	\$ 2,880
60830 - Payroll Accounting	\$ 50	\$ 50	\$ 50	\$ 50	\$ 50	\$ 50	\$ 50	\$ 50	\$ 50	\$ 50	\$ 50	\$ 50	\$ 600
60860 - Computers	\$ 375	\$ 375	\$ 375	\$ 375	\$ 375	\$ 375	\$ 375	\$ 375	\$ 375	\$ 375	\$ 375	\$ 375	\$ 4,500
60880 - Licenses/Legal	\$ -	\$ -	\$ -	\$ 200	\$ -	\$ -	\$ -	\$ -	\$ -	\$ -	\$ -	\$ -	\$ 200
60891 - Property & Casualty	\$ 1,000	\$ 1,000	\$ 1,000	\$ 1,000	\$ 1,000	\$ 1,000	\$ 1,000	\$ 1,000	\$ 1,000	\$ 1,000	\$ 1,000	\$ 1,000	\$ 12,000
60892 - Workers Compensation	\$ -	\$ -	\$ -	\$ 1,400	\$ -	\$ -	\$ -	\$ -	\$ -	\$ -	\$ -	\$ -	\$ 1,400
<b>Total 60900 - Office</b>	\$ 1,705	\$ 1,705	\$ 1,705	\$ 3,305	\$ 1,705	\$ 1,705	\$ 1,705	\$ 1,705	\$ 1,705	\$ 1,705	\$ 1,705	\$ 1,705	\$ 22,060
60910 - Music	\$ 50	\$ 50	\$ 50	\$ 50	\$ 50	\$ 50	\$ 50	\$ 50	\$ 50	\$ 50	\$ 50	\$ 50	\$ 600
60920 - Copyright Fees	\$ -	\$ -	\$ 350	\$ -	\$ -	\$ -	\$ -	\$ 450	\$ -	\$ -	\$ -	\$ -	\$ 800
60930 - Planning Material	\$ -	\$ -	\$ -	\$ -	\$ -	\$ -	\$ -	\$ 650	\$ -	\$ -	\$ -	\$ -	\$ 650
60937 - Audio/Visual Technician	\$ -	\$ -	\$ -	\$ -	\$ -	\$ -	\$ -	\$ -	\$ -	\$ -	\$ -	\$ -	\$ -
60935 - Musicians	\$ -	\$ -	\$ -	\$ 3,700	\$ -	\$ -	\$ 100	\$ -	\$ 100	\$ -	\$ 300	\$ 5,000	\$ 9,200
60940 - Music all other	\$ -	\$ -	\$ -	\$ 125	\$ -	\$ -	\$ 25	\$ -	\$ -	\$ 130	\$ -	\$ -	\$ 280
<b>Total 60960 - Music &amp; Worship</b>	\$ 50	\$ 50	\$ 400	\$ 3,875	\$ 50	\$ 175	\$ 175	\$ 1,150	\$ 150	\$ 180	\$ 350	\$ 5,050	\$ 11,530
61010 - Communion Supplies	\$ 75	\$ 75	\$ 75	\$ 75	\$ 75	\$ 75	\$ 75	\$ 75	\$ 75	\$ 75	\$ 75	\$ 75	\$ 900
61020 - Altar all other	\$ 70	\$ 70	\$ 70	\$ 70	\$ 70	\$ 70	\$ 70	\$ 70	\$ 70	\$ 70	\$ 70	\$ 70	\$ 840
<b>Total 61060 - Altar Guild</b>	\$ 145	\$ 145	\$ 145	\$ 145	\$ 145	\$ 145	\$ 145	\$ 145	\$ 145	\$ 145	\$ 145	\$ 145	\$ 1,740
61110 - Engraving	\$ 20	\$ 20	\$ 20	\$ 20	\$ 20	\$ 20	\$ 20	\$ 20	\$ 20	\$ 20	\$ 20	\$ 20	\$ 240
61120 - Supplies	\$ 25	\$ 25	\$ 25	\$ 25	\$ 25	\$ 25	\$ 25	\$ 25	\$ 25	\$ 25	\$ 25	\$ 25	\$ 300
61130 - Evangelism Other	\$ 25	\$ 25	\$ 25	\$ 25	\$ 25	\$ 25	\$ 25	\$ 25	\$ 25	\$ 25	\$ 25	\$ 25	\$ 300
<b>Total 61100 - Evangelism</b>	\$ 70	\$ 70	\$ 70	\$ 70	\$ 70	\$ 70	\$ 70	\$ 70	\$ 70	\$ 70	\$ 70	\$ 70	\$ 840
61210 - Sunday School/VBS	\$ 40	\$ 40	\$ 40	\$ 40	\$ 40	\$ 40	\$ 40	\$ 40	\$ 40	\$ 40	\$ 40	\$ 40	\$ 480
61220 - Bible Studies	\$ -	\$ -	\$ -	\$ -	\$ -	\$ 110	\$ -	\$ -	\$ 110	\$ -	\$ -	\$ -	\$ 220
<b>Total 61200 - Education</b>	\$ 40	\$ 40	\$ 40	\$ 40	\$ 40	\$ 150	\$ 40	\$ 40	\$ 150	\$ 40	\$ 40	\$ 40	\$ 700
61310 - Supplies	\$ 20	\$ 20	\$ 20	\$ 20	\$ 20	\$ 20	\$ 20	\$ 20	\$ 20	\$ 20	\$ 20	\$ 20	\$ 240
61320 - Fellowship all other/Quilting	\$ 150	\$ 150	\$ 150	\$ 150	\$ 150	\$ 150	\$ 150	\$ 150	\$ 150	\$ 150	\$ 150	\$ 150	\$ 1,800
<b>Total 61300 - Fellowship/Quilting</b>	\$ 170	\$ 170	\$ 170	\$ 170	\$ 170	\$ 170	\$ 170	\$ 170	\$ 170	\$ 170	\$ 170	\$ 170	\$ 2,040
61410 - Supplies	\$ 20	\$ 20	\$ 20	\$ 20	\$ 20	\$ 20	\$ 20	\$ 20	\$ 20	\$ 20	\$ 20	\$ 20	\$ 240
<b>Total 61400 - Stewardship</b>	\$ 20	\$ 20	\$ 20	\$ 20	\$ 20	\$ 20	\$ 20	\$ 20	\$ 20	\$ 20	\$ 20	\$ 20	\$ 240
61510 - Conferences, Etc.	\$ -	\$ -	\$ -	\$ 700	\$ -	\$ 1,300	\$ -	\$ -	\$ -	\$ -	\$ -	\$ -	\$ 2,000
61520 - Council all other	\$ -	\$ -	\$ -	\$ -	\$ -	\$ -	\$ -	\$ -	\$ -	\$ -	\$ -	\$ -	\$ -
<b>Total 61500 - Council</b>	\$ -	\$ -	\$ -	\$ 700	\$ -	\$ 1,300	\$ -	\$ -	\$ -	\$ -	\$ -	\$ -	\$ 2,000
61610 - Supplies	\$ 50	\$ 50	\$ 50	\$ 50	\$ 50	\$ 50	\$ 50	\$ 50	\$ 50	\$ 50	\$ 50	\$ 50	\$ 600
61620 - Health Ministry all other	\$ 10	\$ 10	\$ 10	\$ 10	\$ 10	\$ 10	\$ 10	\$ 10	\$ 10	\$ 10	\$ 10	\$ 10	\$ 120
<b>Total 61600 - Health Ministry</b>	\$ 60	\$ 60	\$ 60	\$ 60	\$ 60	\$ 60	\$ 60	\$ 60	\$ 60	\$ 60	\$ 60	\$ 60	\$ 720
61710 - General Activity	\$ 25	\$ 25	\$ 25	\$ 25	\$ 25	\$ 25	\$ 25	\$ 25	\$ 25	\$ 25	\$ 25	\$ 25	\$ 300
<b>Total 61700 - Youth Ministry</b>	\$ 25	\$ 25	\$ 25	\$ 25	\$ 25	\$ 25	\$ 25	\$ 25	\$ 25	\$ 25	\$ 25	\$ 25	\$ 300
61810 - Food Program	\$ 1,500	\$ 1,500	\$ 1,500	\$ 1,500	\$ 1,500	\$ 1,500	\$ 1,500	\$ 1,500	\$ 1,500	\$ 1,500	\$ 1,500	\$ 1,500	\$ 18,000
61820 - Transportation	\$ 100	\$ 100	\$ 100	\$ 100	\$ 100	\$ 100	\$ 100	\$ 100	\$ 100	\$ 100	\$ 100	\$ 100	\$ 1,200
61830 - Outreach all other	\$ 100	\$ 100	\$ 100	\$ 100	\$ 100	\$ 100	\$ 100	\$ 100	\$ 100	\$ 100	\$ 100	\$ 100	\$ 1,200
61840 - Help	\$ 50	\$ 50	\$ 50	\$ 50	\$ 50	\$ 50	\$ 50	\$ 50	\$ 50	\$ 50	\$ 50	\$ 50	\$ 600
<b>Total 61800 - Outreach Ministry</b>	\$ 1,750	\$ 1,750	\$ 1,750	\$ 1,750	\$ 1,750	\$ 1,750	\$ 1,750	\$ 1,750	\$ 1,750	\$ 1,750	\$ 1,750	\$ 1,750	\$ 21,000
<b>TOTAL EXPENSE</b>	\$ 32,532	\$ 34,267	\$ 33,457	\$ 39,657	\$ 34,167	\$ 34,892	\$ 33,619	\$ 35,064	\$ 35,054	\$ 32,524	\$ 37,579	\$ 37,694	\$ 420,502

<b>INCOME minus EXPENSE</b>	\$ 7,453	\$ (1,282)	\$ 528	\$ (2,672)	\$ (1,182)	\$ 1,093	\$ (3,634)	\$ (11,079)	\$ 1,931	\$ (539)	\$ 3,406	\$ 6,291	\$ 318
<b>ACCUMULATED INCOME minus EXPENSE</b>	\$ 7,453	\$ 6,172	\$ 6,700	\$ 4,028	\$ 2,847	\$ 3,940	\$ 306	\$ (10,772)	\$ (8,841)	\$ (9,380)	\$ (5,973)	\$ 318	\$ 318

# ANNUAL CONGREGATIONAL MEETING OPENING LITURGY

Recognizing that our faith is a living, busy, active and mighty thing, may the grace of our Lord Jesus Christ and the communion of the Holy Spirit be with each of you.

**And also with you.**

Teach us to love you with all our heart, soul, mind and strength.

**Receive our prayer, O God.**

Descend on our hearts, that we may love others in the ways Jesus loves us.

**Receive our prayer, O God.**

Empower us to be enthusiastic in pursuing your vision for our congregation.

**Receive our prayer, O God.**

Move us to engage issues in our community in Christlike ways, and to pursue deep and authentic relationships with those with whom we serve and partner.

**Receive our prayer, O God.**

Strengthen us to face the barriers we encounter in doing your work, learning to work with others amid disagreement.

**Receive our prayer, O God.**

Give us the ability to adapt to the cultural, economic and social changes that occur in the neighborhoods we serve.

**Receive our prayer, O God.**

Guide us to be a healthy congregation that learns from its failures as well as its successes and offers wisdom to others.

**Receive our prayer, O God.**

As we strive to become the church that we proclaim to be, raise up leaders who focus on the gospel of freedom, forgiveness and reconciliation as given to us through God's indescribable act of love in the death and resurrection of Jesus Christ. Renew us daily in our baptism, that we may discover vitality in our relationships with you, each other and those we serve in the world.

**Amen.**

## Founded on Faith



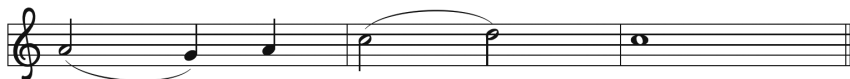
1 Found - ed on faith, the church— a - live by grace—  
2 Your cross, O Christ, re - news our life each day.  
3 E - quipped by prayer, we live the Spir - it's call.  
4 Grow - ing in grace for God's cre - at - ed earth,  
5 Found - ed on faith, called forth, em - pow' red to serve,



pro - claims the gos - pel here and ev - 'ry place.  
Bap - tized in you, we learn and teach and pray.  
Em - pow' red to serve with gifts, both great and small,  
we yearn for jus - tice, peace, and hu - man worth;  
we share God's end - less love with - out re - serve.



The word of God re - sounds through time and space:  
Fed by your love, with thank - ful hearts, we say:  
we bring the liv - ing hope of God to all.  
a world re - stored; a faith - ful, car - ing church.  
Then let us shout a - loud the liv - ing Word!



Al - le - lu - ia!

*All Creation Sings, 1048*

Text and music © 2017 Paul D. Weber, admin.  
Augsburg Fortress. Reproduced by permission.

## THROUGH YOUR GENEROSITY, GOD IS AT WORK ACROSS THE ELCA.

### MISSION SUPPORT

A portion of your offering, called Mission Support, advances the ministry of our church, helping the ELCA nurture Christian community, raise up leaders, serve our neighbors and strive for justice.

### ELCA WORLD HUNGER

Part of our church's long tradition of meeting human needs, ELCA World Hunger testifies to our hope for and commitment to God's promise of a time when we will hunger and thirst no more. ELCA World Hunger walks alongside communities in more than 60 countries — including the United States — to create unique solutions to hunger and poverty.

### LUTHERAN DISASTER RESPONSE

Lutheran Disaster Response shares God's hope, healing and renewal with people whose lives have been disrupted by disasters in the United States and around the world. When the dust settles and the headlines change, we stay to provide ongoing assistance to those in need.

### WHERE NEEDED MOST

Where Needed Most supports the powerful ways we work together around the world — supporting leaders, inspiring young people, fueling ministries and championing global mission. Gifts to Where Needed Most support and sustain the people, congregations, synods and ministries working around the world to realize the hope-filled future God promises.



Evangelical  
Lutheran Church  
in America

Sign up to hear more stories of impact from the ELCA churchwide organization at [ELCA.org/subscribe](https://www.elca.org/subscribe).

Read about Mission Support and learn more at [LivingLutheran.org/SOFIA](https://www.livinglutheran.org/SOFIA).